



DISPLAY GRAPHICS STANDARD PRODUCTS



ART-TO-CART SOLUTION

AMPHORA
BRAND DESIGN



ORIGINATE.

Our award-winning Design-to-Print artists understand the value of design and manufacturing working together. We start each project by listening and exploring brand strategies and choosing the best custom display offering. We can utilize your design or we can create a compelling concept that delivers your brand's positioning along with high-impact visuals that communicate all your touchpoints. Our design or manufacturing facility will send digital proofs for review or actual sample(s) for viewing and testing before proceeding with the final execution.



EXECUTE.

We are your single source solution for the best in merchandising displays utilizing latest technology. We invite you to come and explore our facilities. Our AMPHORA Brand Design center works hand in hand with our manufacturing plant under one roof. As your brand ambassador, we will ensure your brand translates correctly across all media. We take the risk out of the equation. You can count on us.

STANDARD PRINT PRODUCTS



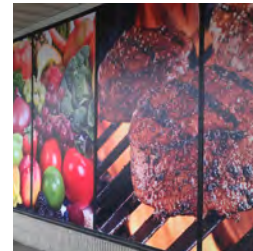
STANDEES



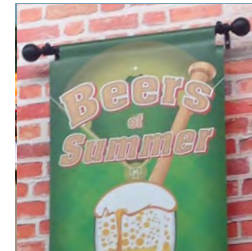
POLE TOP DISPLAYS



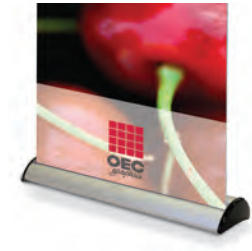
BASE WRAPS



WINDOW GRAPHICS



BANNERS



BANNER STANDS



FLOOR GRAPHICS



CLEAR IMPACT



OWG!



SHELF INNOVATIONS



BLADE SIGNS



POP-UP DISPLAYS



COOLER DIVIDERS



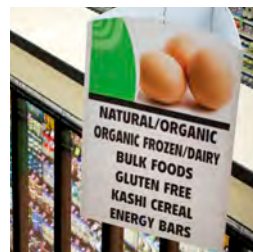
COOLER DOOR DECALS



COUNTER MATS



CHROME DOMZ



END CAP AND AISLE HEADERS



RAIL STRIPS



CASE STACKERS



DIMENSIONAL GRAPHICS

STANDEES

Life-size cutouts that can put you in the center of the promotion. Many people want their picture taken with a standee – which can make your brand mobile as pictures are shared via social media.



Raw Material for Standee & Easel

- B or C Flute Corrugated White/Kraft & White/White
- Plastic Corrugated in White & Black

- Printed in full color

Packaging

- Standee & easel are scored, folded and inserted into a custom carton with an ID label.

POLE TOP DISPLAYS

Pole Toppers can be one of the most exciting and attention-grabbing display types because they break the “shelf barrier” by towering above products. Easy to set-up.



Raw Material for Header

- B or C Flute Corrugated White/Kraft & White/White
- 3/16" White or Black Foam Board

- Printed in full color

Hardware:

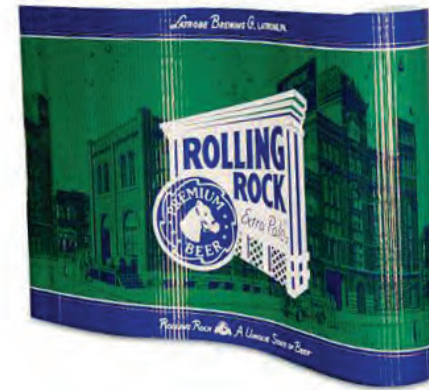
- Kraft White or Black Pole
- Steel Wire Feet
- Pole Top Sign Holder

Packaging

- Standee & easel are scored, folded and inserted into a custom carton with an ID label.

BASE WRAPS

Base wraps, also known as pallet wrap covers or display wraps, are a great way to conceal a pallet or the base of a display to make it more attractive.



Stock:

- Single Faced Corrugate
- 12 pt C1S

Size:

- 24" x 146" (for 36" x 36" skid)
- 24" x 170" (for 36" x 48" skid)
- 24" x 178" (for 40" x 48" skid)

Printed in full color

- Cut to size

Hardware

- 2 Pieces twinstick tape
- Inserted into a 4" x 4" x 24" custom carton with an ID label.

WINDOW GRAPHICS

Showcase your brand with window graphics that will capture your customer's attention. Create a new promotion where you never thought it was possible by towering above products. Easy to set-up.

- Static Cling and Lo Tac Available
- White or Clear with Spot White Options
- Fade Resistant
- Easy to Install



BANNERS

Our banners and grand format outdoor products are the most recognized method to communicate your brand. One sided, two sided, or mesh material. Our banners are quality and will prominently showcase your brand almost anywhere.

Raw Material

- 9 oz. Mesh Vinyl Polypropylene
- 13 oz. Ultra Smooth Blockout Vinyl
- 15 oz. Ultra Smooth Blockout Vinyl
- 12 oz. Scrim Vinyl
- 13 oz. Scrim Vinyl
- 15 oz. Scrim Vinyl

- Printed in full color one side.

Finishing:

- Hems, Grommets, Ropes (please specify)

Packaging

- Graphic is rolled and inserted into a custom carton with an ID label.



BANNER STANDS

Eye-catching banner stands offer the perfect media to broadcast your message. Simple to set-up and move, banner stands keep your advertising message mobile.

economy

Perfect for promotions or store front displays

Printed on DuraFlex for vivid color and long wear

Expo

An extremely cost effective and reliable roll-up banner stand with the classic roll-up design. Equipped with the basic and well tested functions of a retractable banner stand, but with a more simple and low weight construction. Finished in Anodized Silver with heavy duty molded end plates and bungee three piece pole. Padded carry bag included.

Printed on DuraFlex for vivid color and long wear.

Graphic Size: 33.45" x 79.5"
6.2 lbs.



Chrome Retractable Stand

Economy meets style. Printed on DuraFlex for vivid color and long wear.

Bag included
Graphic Size: 33.46" x 78.75"
Carton size 120" x 8" x 67"
10 lbs.



Chrome Retractable Stand Double

Double sided for viewing from both directions. Economical and attractive. Printed on DuraFlex for vivid color and long wear.

Bag included
Graphic Size: 33.46" x 78.75"
11 lbs.



DuraFlex
High-Gloss surface, optimum ink adhesion, scratch and water resistant. Bright white front with lightblocking anti-static gray back. Ideal for pop up displays.



contemporary

Combination of elegance and value in a durable stand

Printed on DuraFlex for vivid color and long wear

Contemporary

Quick and simple to use, this stand combines elegance with excellent value. Finished in Anodized Silver with heavy duty molded end plates and bungee three piece pole. Padded carry bag included. Printed on DuraFlex for vivid color and long wear.

Also Available As Double Sided

Graphic Size: 31.5" x 83.25"
Stand Dimensions: 32.5"w x 7.25"d x 3.5"h



Chrome Scrolling Banner Stand

Scrolling Banner Stand offers you and eye-catching visual merchandising option. The continual banner stand graphic scrolls vertically, which is perfect if you have multiple messages or images. Your message is relayed in constant motion as the stand scrolls slow enough to read, but fast enough to attract interest. The scrolling banner stand is great for exhibitions, POP, retail or event marketing.

Powered by a 110 V AC motor. Simply plug the stand into the wall, and your graphic will begin scrolling. Units are silver and come in a black padded canvas carrying bag.

Printed on DuraFlex for vivid color and long wear.

Bag included
Graphic Size: 33.46" x 165"
13.5 lbs.



A Board

Double sided
Printed digital photographic with Duragloss overlaminate. The ultimate resolution!

Graphic Size: 23.5" x 33.4"
Carton size 120" x 8" x 67"
8 lbs.



Digital Photographic with Duragloss Overlaminate
Digitally imaged to photographic base for superior resolution and then laminate applied for gloss and durability



BANNER STANDS

Eye-catching banner stands offer the perfect media to broadcast your message. Simple to set-up and move, banner stands keep your advertising message mobile.

eco

Bamboo is the fastest growing plant on earth, the perfect renewable resource. Combined with eco friendly adhesives and construction practices we have a sustainable solution for your display needs.

Bamboo Retractable

Bamboo is the fastest growing plant on earth and one of our most renewable and sustainable natural resources. It is actually a grass, not a tree – no forests are destroyed to produce bamboo products. The environmental impact is kept at a minimum. The material gives a very elegant impression and is extremely durable comparable to hardwood. Choose bamboo at your next presentation and signal your commitment to sustainability!

Eco Cotton Fabric Bag
Graphic Size: 33.45" x 79.5"
7.7 lbs.



Bamboo X Stand

Attractive minimalist design
Perfect graphic presentation
Light weight / good stability
Printed on biodegradable and recyclable vinyl.

Eco cotton fabric bag
Graphic Size: 23.6" x 70.9"
2.6 lbs.



premium

Designed for extreme durability

The extra thick aluminum assures years of daily use

Printed Digital Photographic with Duragloss laminate for superior resolution

Ultra Durable Stand

This stand will hold up to the most demanding usage. BannerUp has the most robust design and is produced in metal sheet instead of aluminium. Also equipped with swivel-feet for increased stability if needed. Printed digital photographic with DuraGloss overlaminate. The ultimate resolution!

Available 50w Halogen Lamp and quick change kits

Bag included
Comes with top rail connecting strip for displaying side by side
Graphic Size: 34.5" x 79"
13.2 lbs.



Premium Retractable Stand

BannerUp Plus is a perfectly designed unit with extreme durability. The extra thick aluminium cassette makes it the toughest unit on the market – a guarantee for many years of daily use. Printed digital photographic with DuraGloss overlaminate. The ultimate resolution!

Bag included
Graphic Size: 34.5" x 81"
11.8 lbs.



2D & 3D FLOOR GRAPHICS

They can catch attention of potential buyers before a shopping decision is made, giving you valuable input at a critical point in the buying process. Directional floor graphics can assist in directing traffic to hot promotions.



Raw Material

- Vinyl - 3.4mil with 4mil Overlam
- Aluminum
- PVC base options
- Non Skid Film and Liquid Laminatons
- Custom Die Cut

- Printed in full color one side.

Packaging

- Graphic is inserted into a custom carton with an ID label.

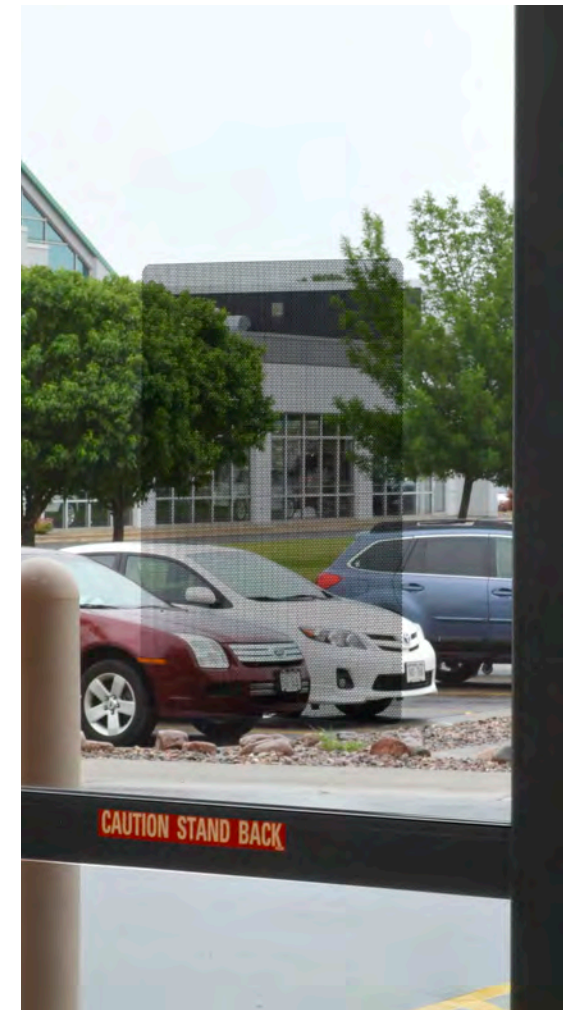
OEC can create 3D graphics
for real **POP!**

CLEAR IMPACT

Clear Impact Window Graphics are perforated adhesive backed vinyl window art that can show your brand in the most prominent locations. Make an immediate impact with our easy to use window graphics product. Easy to install and easy to remove.



OUTSIDE LOOKING IN



INSIDE LOOKING OUT

Indoor

Raw Material for Standee & Easel

- Perforated 6 mil vinyl.

Common Sizes:

- 18" x 24", 24" x 32", 36" x 48", 48" x 72"
- Printed in full color one side. Back side is black.

Packaging

- Graphic is rolled and inserted into a custom carton with an ID label.

Outdoor

Raw Material for Standee & Easel

- Perforated 6 mil vinyl.

Common Sizes:

- 18" x 24", 24" x 32", 36" x 48", 48" x 72"
- Printed in full color one side. Back side is black.

Packaging

- Graphic is rolled and inserted into a custom carton with an ID label.

OWG!

Oversized Wall Graphics are engineered to adhere to any smooth wall surface and cleanly removed when your promotion is complete. Ships in a small tube, but makes a dramatic impression!



Raw Material

- White vinyl - 6mil (repositionable)

Common Sizes:

- 18" x 24", 24" x 32", 36" x 48", 48" x 72"
- Printed in full color one side.

Packaging

- Graphic is rolled and inserted into a custom carton with an ID label.

SHELF INNOVATIONS

The name “Dangler” depicts their ability to move and attract attention. Additionally, danglers snap easily into price channels or can be affixed to a wall, shelf or pole with pressure sensitive adhesive.



Raw Material

- Material selected to match the best look for your brand.
- Printed in full color one side.

Packaging

- Graphic is inserted into a custom carton with an ID label.

BLADE SIGNS

Stop traffic from 50 feet away! Our blade signs will affix to any shelf and draw attention to your brand. Simple to set up and extremely effective.



Raw Material:

- High Impact Polystyrene (HIPS) .010" thru .080"
- Expanded PVC 3mm
- Expanded PVC 6mm
- Coated SBS card stock 8pt
- Coated SBS card stock 12pt
- Coated SBS card stock 24pt

Hardware: multiple options to fit the type and style of shelving or your specific need.

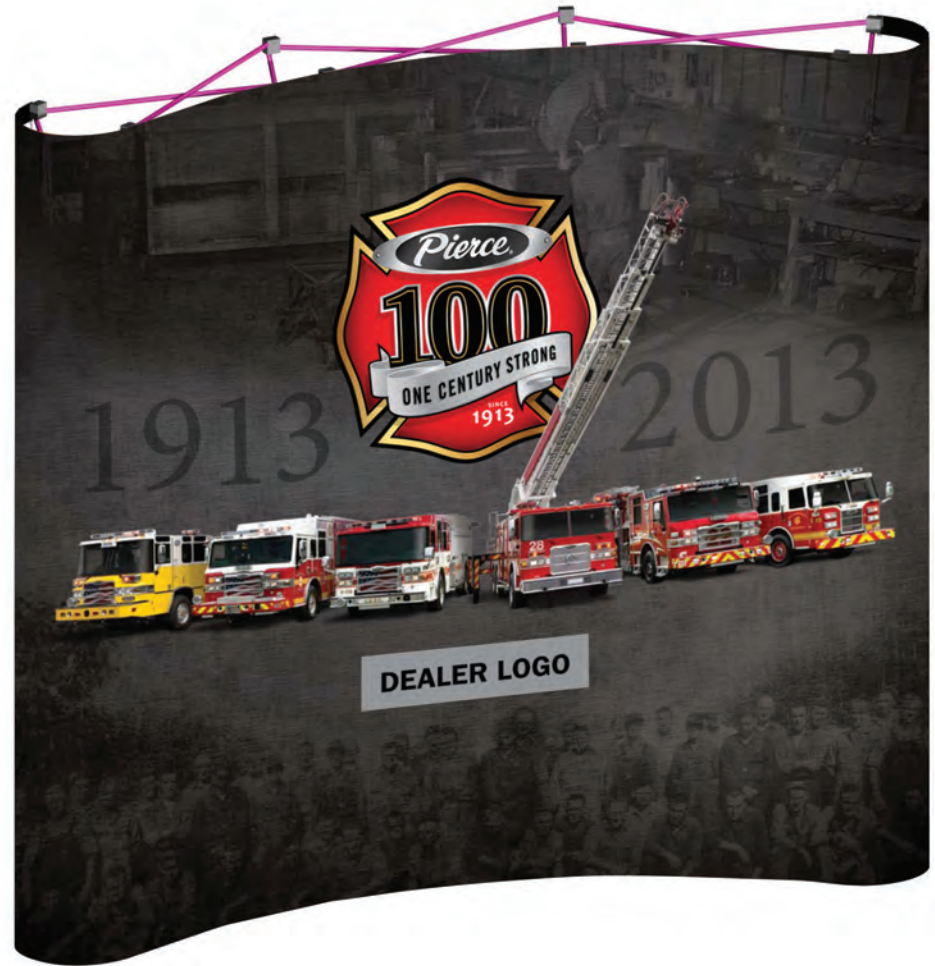
- Printed in full color both sides.

Packaging

- Graphic is inserted into a custom carton with an ID label.

POP-UP DISPLAYS

Tradeshows made easy! Your set up and take down nightmares are over. You can focus on fun and your customers by using our Pop-Up Displays. Promote your brand and products with ease.



COOLER DIVIDERS

Separate your brand from the rest. Our durable and brilliant freezer product dividers will draw attention to your product within a sea of mediocrity. Easy to set up, takes almost no space, and gets the results you need for your brand.



Raw Material:

- High Impact Polystyrene (HIPS) .010" thru .080"

Hardware: Extruded black or white foot/base

- Custom Die Cut and Heat bent foot/base.
- Printed in full color both sides.

Packaging

- Graphic is inserted into a custom carton with an ID label.

COOLER DOOR DECALS

Tight spaces are no trouble if you promote your brand in the right way. Cooler door decals get the job done. Installs easily and removes cleanly every time.

Raw Material:

- 4 mil white or clear vinyl
- Printed in full color one side.

- Printed in full color one side.

Packaging

- Graphic is inserted into a custom carton with an ID label.



COUNTER MATS

At the check out, on the bar, at your table, counter mats get noticed and deliver results. Easy to install and removes cleanly.



Raw Material

- 4 mil white vinyl
- 4 mil non skid lamination

— Or —

- 3 mm foam backing with a durable clear top sheet. Insert your own graphic within underneath for an easily changeable message

Common Sizes:

- 10.5" x 13" (8.5" x 11" printed graphic)
- 13.25" x 19.25" (11" x 17" printed graphics)
- Printed in full color one side.

Packaging

- Graphic is inserted into a custom carton with an ID label.

CHROME DOMZ

Our uniquely engineered 3D Chrome Domz signs will set you apart from the competition. Position on a wall, stall, end cap, anywhere! ChromeDomz speak premium – your brand deserves nothing less.



Raw Material:

- Bright Chrome or Brushed finished steel

Common Sizes:

- 10" x 10"
- 12" x 12"
- 12" x 16"
- 12" x 18"
- 16" x 24"
- 18" x 24"
- 24" x 32"

- Printed in full color one side.

Packaging

- Graphic is inserted into a custom carton with an ID label.

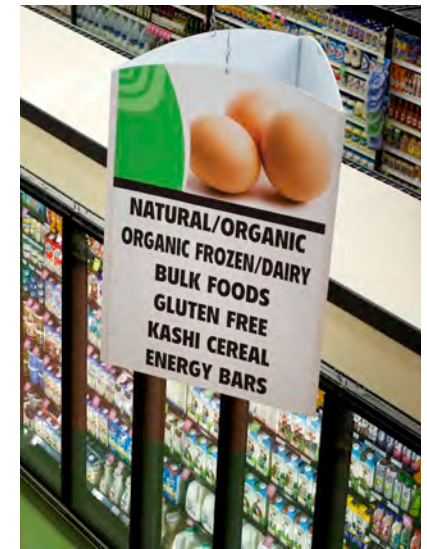
AISLE & END CAP DISPLAYS

Raw Material

- Material selected to match the best look for your brand.
- Printed in full color one side.

Packaging

- Graphic is inserted into a custom carton with an ID label.



RAIL STRIPS

Don't miss an opportunity to promote your brand even within the smallest of places. We have a promotional product to fit any need. These rail strips bring the attention your brand deserves right at the point of decision.



Raw Material

- 10 mil white rigid vinyl

Common Sizes:

- 1.125" x 6" – 1" x 6"
- 1.125" x 12" – 1" x 12"
- 1.125" x 24" – 1" x 24"
- 1.125" x 36" – 1" x 36"
- 1.125" x 48" – 1" x 48"
- Printed in full color one side.

Packaging

- Graphic is inserted into a custom carton with an ID label.

CASE STACKERS

Raw Material for Standee & Easel

- B or C Flute Corrugated White/Kraft & White/White
- Plastic Corrugated in White & Black

Common Sizes:

- 24" x 72"; 30" x 72"
- Printed in full color

Packaging

- Standee & easel are scored, folded and inserted into a custom carton with an ID label.



DIMENSIONAL GRAPHICS

Help customers shop more efficiently by using bright, colorful 3D signs. Identify departments, service areas and check out services. 3D graphics can also be utilized in calling attention to special products or promotions.



Call your sales representative for more information.

POINT-OF-SALE

+

IN-STORE SIGNAGE

+

OUTDOOR ADVERTISING

+

TRADESHOW

+

EVENT